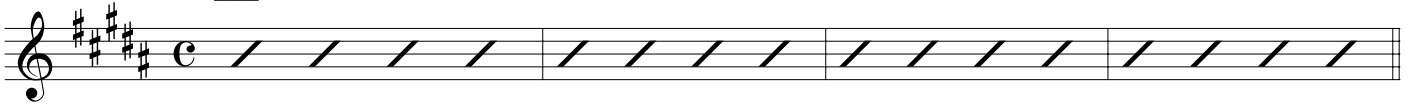


♩=71

# None But Jesus

Words and Music by Brooke Fraser

B



A

B



E



C#m7



Verse 1: In the qui - et, in the still - ness, I know \_\_\_\_\_ that You \_\_\_\_\_ are God.  
Verse 2: In the cha - os, in con - fu - sion, I know \_\_\_\_\_ You're sov - reign still. \_\_\_\_\_

F#



B



E



\_\_\_\_\_ In the se - cret of Your pre - sence, I know \_\_\_\_\_  
\_\_\_\_\_ In the mo - ment of my weak - ness, You give \_\_\_\_\_

C#m7



F#



C#m



D#m/C#



B



\_\_\_\_\_ there I \_\_\_\_\_ am re - stored. \_\_\_\_\_ When You  
\_\_\_\_\_ me grace \_\_\_\_\_ to do \_\_\_\_\_ Your \_\_\_\_\_ will. \_\_\_\_\_ When You

B



E



B/D#



F#



C#m



D#m/C#



call, I won't \_\_\_\_\_ re - fuse. \_\_\_\_\_ Each new  
call, I won't \_\_\_\_\_ de - lay. \_\_\_\_\_ This, my

B



E



B/D#



F#



1st x only



day, a - gain \_\_\_\_\_ I'll choose. \_\_\_\_\_  
song, through all \_\_\_\_\_ my days. \_\_\_\_\_

**C**

G#m 4fr. E 7fr. B 7fr. F# 9fr.

Chorus: There is no one else for me. None.

C#m7 9fr. G#m 4fr. E 7fr. B 7fr.

but Je - sus. Cru - ci - fied to set me free.

F# 9fr. 1. C#m 4fr.

Last to

Now I live to bring Him praise.

2. C#m 4fr. D G#m 4fr. E 7fr. B 7fr.

to bring Him praise. Chorus 2: There is no one else for me.

F# 9fr. C#m7 9fr. G#m 4fr.

None but Je - sus. Cru - ci - fied to

E 7fr. B 7fr. F# 9fr. C#m 4fr.

set me free. Now I live to bring Him praise.

**E** G#m 4fr. E 7fr. F# 9fr. B 7fr. G#m 4fr. E 7fr.

Instrumental:

F# 9fr. B 7fr. F G#m 4fr. E 7fr. B 7fr.

A musical staff in treble clef with a key signature of three sharps (F#, C#, G#). The staff contains a series of slashes indicating a guitar solo. Above the staff are guitar chord diagrams for F# (9fr.), B (7fr.), F (boxed), G#m (4fr.), E (7fr.), and B (7fr.).

Bridge: All my de - light \_\_\_\_\_ is in \_\_\_\_\_ You, \_\_\_\_\_ Lord. \_\_\_\_\_

F# 9fr. C#m7 9fr. G#m 4fr.

A musical staff in treble clef with a key signature of three sharps. The staff contains a melody line. Above the staff are guitar chord diagrams for F# (9fr.), C#m7 (9fr.), and G#m (4fr.).

\_\_\_\_\_ All of my \_\_\_\_\_ hope, \_\_\_\_\_ all of my \_\_\_\_\_ strength. \_\_\_\_\_ All my de-light \_\_\_\_\_

E 7fr. B 7fr. F# 9fr. C#m7 9fr.

A musical staff in treble clef with a key signature of three sharps. The staff contains a melody line. Above the staff are guitar chord diagrams for E (7fr.), B (7fr.), F# (9fr.), and C#m7 (9fr.).

\_\_\_\_\_ is in \_\_\_\_\_ You, \_\_\_\_\_ Lord. \_\_\_\_\_ For - e - ver - more. \_\_\_\_\_

C#m7 9fr. D al Coda

A musical staff in treble clef with a key signature of three sharps. The staff contains a series of slashes. Above the staff is a guitar chord diagram for C#m7 (9fr.) and the instruction "D al Coda".

G C#m 4fr.

Coda

A musical staff in treble clef with a key signature of three sharps. The staff contains a series of chords. Above the staff are guitar chord diagrams for G (boxed) and C#m (4fr.). To the left of the staff is the instruction "Coda".

to bring Him praise. \_\_\_\_\_