

Moto Perpetuo

Op. 11

PAGANINI

Allegro

p

p

A

mf

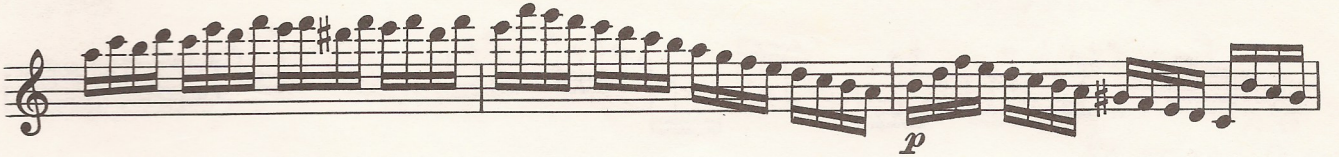
pp

B

cresc.

This page of musical notation consists of ten staves of music. The notation is written in treble clef and includes various note values, accidentals, and dynamic markings. The first staff begins with a treble clef and a key signature of one sharp (F#). The music is characterized by a complex, rhythmic pattern of eighth and sixteenth notes. A dynamic marking of *ff* (fortissimo) is present in the sixth staff. A first ending is marked with a '1' above the staff, and a second ending is marked with a '2' above the staff. A section marked 'C' is indicated above the fourth staff. The notation is dense and intricate, typical of a technical exercise or a piece of music requiring advanced playing skills.

This page of musical notation consists of ten staves of music. The notation is written in treble clef and includes various accidentals (sharps, flats, naturals) and dynamic markings. The dynamics include *p* (piano), *mf* (mezzo-forte), and *f* (forte). Chord symbols *E* and *F* are placed above the staves. The music features a variety of rhythmic patterns, including eighth and sixteenth notes, and rests.



pp

J

p

K

f

ff