

ALL ABOARD for SLUMBERLAND

Words by
TOM TARLTON
Music by
HARRY CHARLES



GRAPHIC STUDIOS
SAINT LOUIS

Published by
TRADE MARK
PRODUCER
MUSIC CO.
INCORPORATED
ST. LOUIS, U.S.A.

All Aboard For Slumberland

Words by
TOM TARLTON

Music by
HARRY CHARLES
Composer of
"Waiting Lorayne For You"

Valse lento

f

dolce

Bid your toys good-day, You are tired of play,
Just like girls and boys, Wear - y lit - tle toys,

Dreamily

p

Soon we'll wend our way to bed; Those eyes, like lead, Are so heav-y dear,
Tir - ing of your noise, de - light To rest at night; Ev - 'ry-thing that grows

Sand - man must be near, He'll be here be - fore prayers are said, Sleep-y head;
Longs for sweet re - pose, Ev - en lit - tle rose-bud-dies white, Close up tight;

Nod - ding on the sly, That means you and I Must be go - ing
On - ly Mis - ter Bat, Prowl - ing Thom - as Cat, Craft - y mouse and

by and by; You've be - gun to doze, Soon those eyes will
fat old rat Swear that night's the time For both fun and

close; You can't help, Mo - ther knows, though you try, That is why it is --
crime; - Can you fan - cy what I'm driv - ing at? It is that it is --

rall.

REFRAIN

p a tempo

Time that lit - tle tots were all sleep - - ing, Close your eyes, you'd best not be

p a tempo

peep - - ing, For this way the Sand-man is creep - - ing,

Sneak - ing o'er the land; Don't you un - der - stand? When he finds that

rit. *a tempo*

rit. *a tempo*

late hours you're keep - - ing, He will fill his hand with sand

and Toss it in your eyes, So you'd best be 'wise,

All a - board for Slum ber land. It's land.

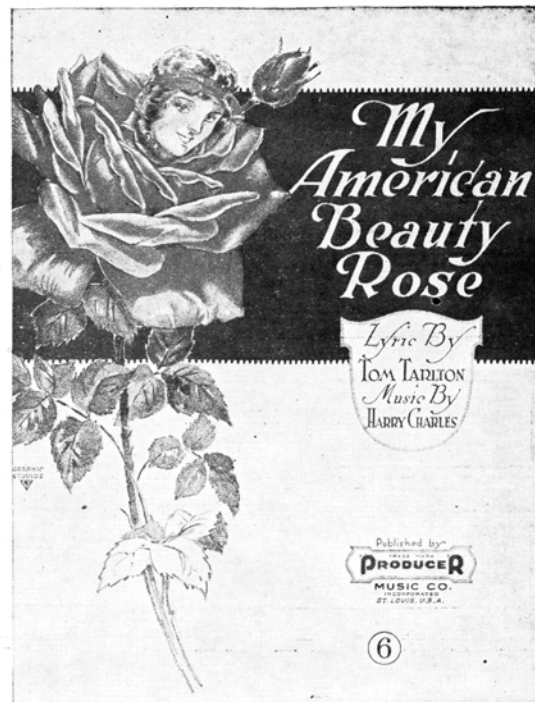
p *rall.* *pp* *pp*

p *rall.* *pp* *mf* *pp*

THERE IS A DISTINCTIVE DIFFERENCE IN PRODUCER MUSIC



THE
SEASON'S
FOUR
BIG
SONG
HITS

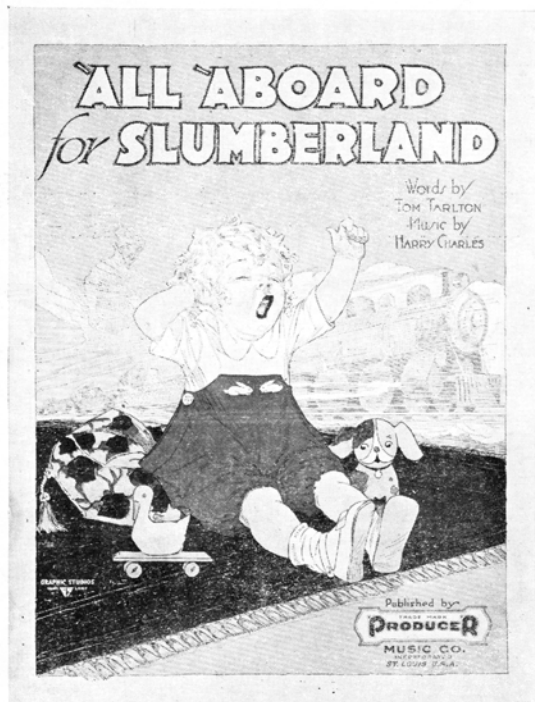


THE WORLD LOVES A

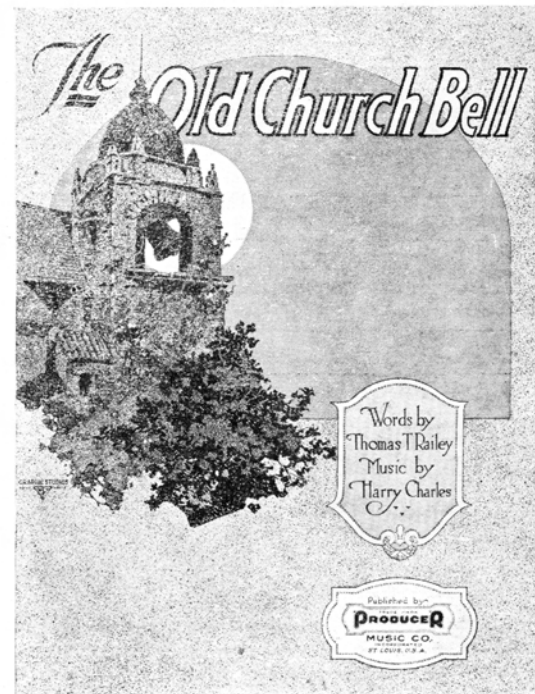


PUBLISHED BY PRODUCER MUSIC CO., ST. LOUIS, MO., U. S. A.

FOR SALE EVERYWHERE



YOU
HEAR
THEM
WHEREVER
YOU
GO



YOU WILL ENJOY SINGING AND PLAYING PRODUCER MUSIC