

Praeludium und Fuge e-Moll

J.S. Bach

Praeludium

Soprano
Alto
Tenore
Basso

Musical score for Soprano, Alto, Tenor, and Bass, measures 1-6. The key signature is one sharp (F#) and the time signature is common time (C). The Soprano part begins with a quarter rest, followed by a dotted quarter note G4, an eighth note A4, and a quarter note B4. The Alto part begins with a quarter rest, followed by a dotted quarter note G4, an eighth note A4, and a quarter note B4. The Tenor part begins with a quarter rest, followed by a dotted quarter note G4, an eighth note A4, and a quarter note B4. The Bass part begins with a quarter rest, followed by a dotted quarter note G3, an eighth note A3, and a quarter note B3.

7

S
A
T
B

Musical score for Soprano, Alto, Tenor, and Bass, measures 7-12. The Soprano part begins with a quarter note G4, followed by a dotted quarter note A4, an eighth note B4, and a quarter note C5. The Alto part begins with a quarter note G4, followed by a dotted quarter note A4, an eighth note B4, and a quarter note C5. The Tenor part begins with a quarter note G4, followed by a dotted quarter note A4, an eighth note B4, and a quarter note C5. The Bass part begins with a quarter note G3, followed by a dotted quarter note A3, an eighth note B3, and a quarter note C4.

13

S
A
T
B

Musical score for Soprano, Alto, Tenor, and Bass, measures 13-18. The Soprano part begins with a quarter note G4, followed by a dotted quarter note A4, an eighth note B4, and a quarter note C5. The Alto part begins with a quarter note G4, followed by a dotted quarter note A4, an eighth note B4, and a quarter note C5. The Tenor part begins with a quarter note G4, followed by a dotted quarter note A4, an eighth note B4, and a quarter note C5. The Bass part begins with a quarter note G3, followed by a dotted quarter note A3, an eighth note B3, and a quarter note C4.

19

S
A
T
B

Musical score for Soprano, Alto, Tenor, and Bass, measures 19-24. The Soprano part begins with a quarter note G4, followed by a dotted quarter note A4, an eighth note B4, and a quarter note C5. The Alto part begins with a quarter note G4, followed by a dotted quarter note A4, an eighth note B4, and a quarter note C5. The Tenor part begins with a quarter note G4, followed by a dotted quarter note A4, an eighth note B4, and a quarter note C5. The Bass part begins with a quarter note G3, followed by a dotted quarter note A3, an eighth note B3, and a quarter note C4.

Fuge

Measures 1-13 of the Fugue. The Soprano part begins with a melodic line in G major, 3/4 time. The Alto, Tenor, and Bass parts are silent, indicated by whole rests.

Measures 14-23. The Soprano part continues its melodic line. The Alto part enters with a counter-melody. The Tenor and Bass parts remain silent.

Measures 24-34. The Soprano part continues. The Alto part continues its counter-melody. The Tenor part enters with a third voice. The Bass part remains silent.

Measures 35-44. The Soprano part continues. The Alto part continues. The Tenor part continues. The Bass part enters with a fourth voice.

44

Soprano (S), Alto (A), Tenor (T), Bass (B) vocal parts for measures 44-50. The key signature is one sharp (F#). The Soprano part begins with a half note G4, followed by quarter notes A4, B4, and C5. The Alto part has a half note G4, followed by eighth notes A4, B4, C5, D5, E5, F#5, G5, A5, B5, C6. The Tenor part has a half note G4, followed by a whole rest. The Bass part has a half note G3, followed by eighth notes A3, B3, C4, D4, E4, F#4, G4, A4, B4, C5.

51

Soprano (S), Alto (A), Tenor (T), Bass (B) vocal parts for measures 51-56. The key signature is one sharp (F#). The Soprano part has a half note G4, followed by quarter notes A4, B4, C5, D5, E5, F#5, G5, A5, B5, C6. The Alto part has a half note G4, followed by quarter notes A4, B4, C5, D5, E5, F#5, G5, A5, B5, C6. The Tenor part has a half note G4, followed by quarter notes A4, B4, C5, D5, E5, F#5, G5, A5, B5, C6. The Bass part has a half note G3, followed by quarter notes A3, B3, C4, D4, E4, F#4, G4, A4, B4, C5.

57

Soprano (S), Alto (A), Tenor (T), Bass (B) vocal parts for measures 57-63. The key signature is one sharp (F#). The Soprano part has a half note G4, followed by quarter notes A4, B4, C5, D5, E5, F#5, G5, A5, B5, C6. The Alto part has a half note G4, followed by quarter notes A4, B4, C5, D5, E5, F#5, G5, A5, B5, C6. The Tenor part has a half note G4, followed by quarter notes A4, B4, C5, D5, E5, F#5, G5, A5, B5, C6. The Bass part has a half note G3, followed by quarter notes A3, B3, C4, D4, E4, F#4, G4, A4, B4, C5.

64

Soprano (S), Alto (A), Tenor (T), Bass (B) vocal parts for measures 64-70. The key signature is one sharp (F#). The Soprano part has a half note G4, followed by quarter notes A4, B4, C5, D5, E5, F#5, G5, A5, B5, C6. The Alto part has a half note G4, followed by quarter notes A4, B4, C5, D5, E5, F#5, G5, A5, B5, C6. The Tenor part has a half note G4, followed by quarter notes A4, B4, C5, D5, E5, F#5, G5, A5, B5, C6. The Bass part has a half note G3, followed by quarter notes A3, B3, C4, D4, E4, F#4, G4, A4, B4, C5.

Praeludium und Fuge e-Moll

SOPRANO

J.S. Bach

Praeludium

Musical score for the Praeludium in E minor, BWV 555, Soprano part. The score is written in treble clef with a key signature of one sharp (F#) and a common time signature (C). It consists of four staves of music. The first staff begins with a treble clef, a key signature of one sharp, and a common time signature. The music features a mix of eighth and sixteenth notes, with some rests and accidentals. The second staff starts at measure 7. The third staff starts at measure 13. The fourth staff starts at measure 19 and ends with a double bar line.

Fuge

Musical score for the Fugue in E minor, BWV 555, Soprano part. The score is written in treble clef with a key signature of one sharp (F#) and a 3/4 time signature. It consists of eight staves of music. The first staff begins with a treble clef, a key signature of one sharp, and a 3/4 time signature. The music features a mix of eighth and sixteenth notes, with some rests and accidentals. The second staff starts at measure 14. The third staff starts at measure 24. The fourth staff starts at measure 35. The fifth staff starts at measure 44. The sixth staff starts at measure 51. The seventh staff starts at measure 57. The eighth staff starts at measure 64 and ends with a double bar line.

Praeludium und Fuge e-Moll

ALTO

J.S. Bach

Praeludium

Musical score for the Praeludium in E minor, BWV 555, for Alto voice. The score is written in treble clef with a key signature of one sharp (F#) and a common time signature (C). It consists of four staves of music. The first staff begins with a treble clef, a key signature of one sharp, and a common time signature. The music features a mix of eighth and sixteenth notes, with some rests and slurs. The second staff starts at measure 7. The third staff starts at measure 13. The fourth staff starts at measure 19 and ends with a double bar line.

Fuge

Musical score for the Fugue in E minor, BWV 555, for Alto voice. The score is written in treble clef with a key signature of one sharp (F#) and a 3/4 time signature. It consists of eight staves of music. The first staff begins with a treble clef, a key signature of one sharp, and a 3/4 time signature. The music is a fugue, characterized by its imitative texture and complex rhythmic patterns. The second staff starts at measure 15. The third staff starts at measure 26. The fourth staff starts at measure 37. The fifth staff starts at measure 47. The sixth staff starts at measure 53. The seventh staff starts at measure 59. The eighth staff starts at measure 65 and ends with a double bar line.

Praeludium und Fuge e-Moll

TENORE

J.S. Bach

Praeludium

Musical score for the Praeludium, BWV 555, for Tenor. The piece is in E minor and common time (C). It consists of 20 measures. The notation is on a single treble clef staff. The key signature has one sharp (F#). The time signature is common time (C). The piece begins with a quarter rest, followed by a series of eighth and sixteenth notes, including some grace notes. The melody is simple and expressive, ending with a whole note chord.

Fuge

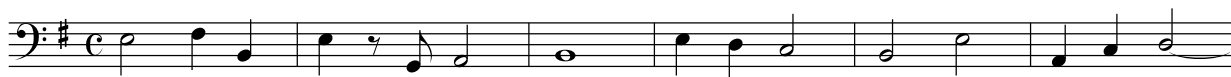
Musical score for the Fugue, BWV 555, for Tenor. The piece is in E minor and 3/4 time. It consists of 65 measures. The notation is on a single treble clef staff. The key signature has one sharp (F#). The time signature is 3/4. The piece begins with a 15-measure introduction, followed by the main fugue. The melody is more complex, featuring many sixteenth and thirty-second notes. The piece ends with a 7-measure coda. The notation includes various rhythmic values and accidentals.

Praeludium und Fuge e-Moll

BASSO

J.S. Bach

Praeludium



Fuge

