

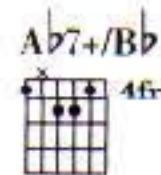
MERAVIGLIOSA CREATURA

DAL / FROM THE ALBUM DISPETTO

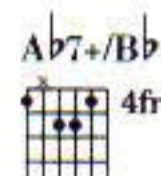
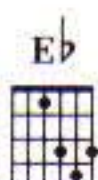
musica/music: G.Nannini parole/words: G.Nannini & M.Redeghieri

BOMB NO. 13

Moderato



Musical staff with notes and chords. Chords: **Mib** (E-flat), **Lab7+/Sib** (A-flat 7 plus / B-flat).



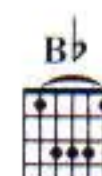
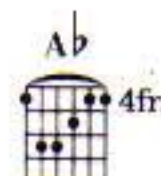
Musical staff with notes and chords. Chords: **Mib** (E-flat), **Lab7+/Sib** (A-flat 7 plus / B-flat).



Mol - ti ma - ri e fiu - mi at - tra - ver - se - rò
Lu - ce dei miei oc - chi bril - la su di me

Musical staff with notes and lyrics.

Mib



den - tro la tua ter - ra mi ri - tro - ve - rai
vo - glio mil - le lu - ne per ac - ca - rez - zar - ti

Musical staff with notes and lyrics. Chords: **Fam** (F minor), **Lab** (A-flat), **Sib** (B-flat).

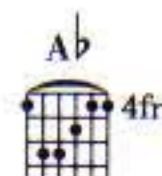
Fam

Lab

Sib

tur - bi - ni e tem - pe - ste io ca - val - che - rò
pen - do dai tuoi so - gni ve - glio su di te

Musical staff with notes and lyrics.



vo - le - rò tra i ful - mi - ni per a - ver - ti.

Musical staff with notes and lyrics. Chords: **Fam** (F minor), **Lab** (A-flat), **Sib** (B-flat).

Fam

Lab

Sib

A

Me - ra - vi - glio - sa crea - tu - ra sei so - la al mon - do me - ra - vi - glio - sa pa -

Mib Dom Lab Sib Mib Dom

u - ra d'a - ver - ti ac - can - to oc - chi di so - le — mi bru - cia - no in mez - zo al - cuo - re

Lab Sib Mib Dom Lab Sib

a - mo - re è vi - ta — me - ra - vi - glio - sa.

B

Dal $\frac{2}{4}$ al $\frac{3}{4}$ poi segue

Mib Dom Lab Sib

non sve - gliar - ti non — sve - gliar - ti non sve - gliar - ti an - co - ra.

Da A a B

Fam Lab Sib

Ah — ah — ah —

Mib Dom Lab Sib Mib Dom

ah —

Tastiere

Lab Sib

Me - ra - vi - glio - sa crea - tu - ra un ba - cio len - to me - ra - vi - glio - sa pa -

F **Dm** **Bb** **C** **F** **Dm**



u - ra d'a - ver - ti ac - can - to al - l'im - prov - vi - so — tu scen - di nel pa - ra - di - so

Bb **C** **F** **Dm** **Bb** **C**

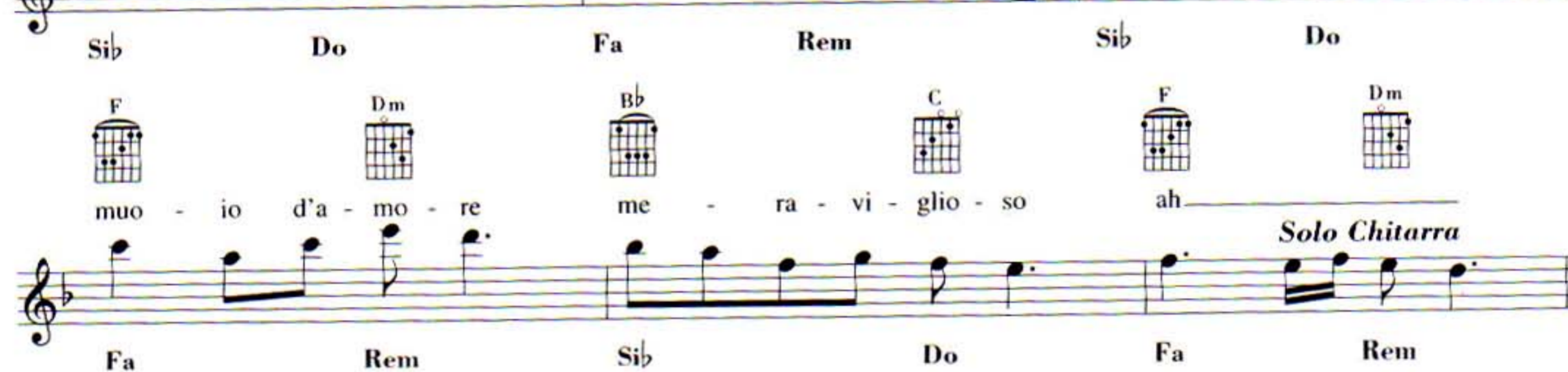


muo - io d'a - mo - re me - ra - vi - glio - so ah

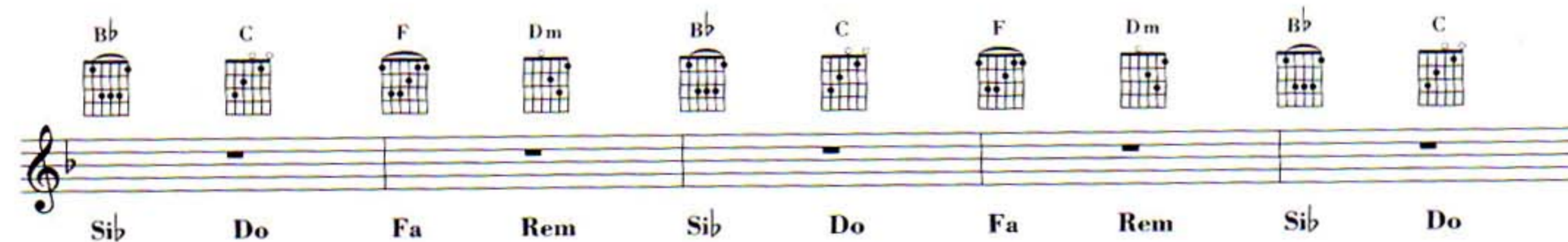
F **Dm** **Bb** **C** **F** **Dm**

Solo Chitarra

Fa **Rem** **Sib** **Do** **Fa** **Rem**



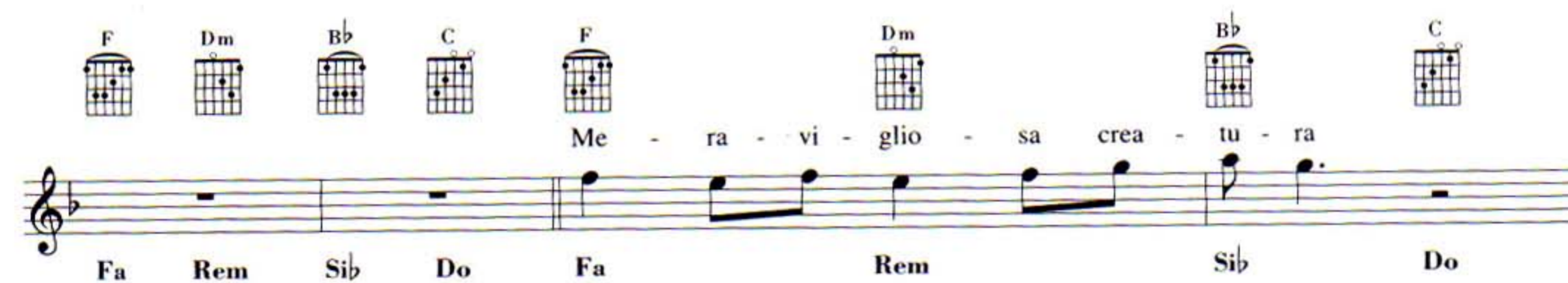
Bb **C** **F** **Dm** **Bb** **C** **F** **Dm** **Bb** **C**



Sib **Do** **Fa** **Rem** **Sib** **Do** **Fa** **Rem** **Sib** **Do**

me - ra - vi - glio - sa crea - tu - ra

F **Dm** **Bb** **C** **F** **Dm** **Bb** **C**



Fa **Rem** **Sib** **Do** **Fa** **Rem** **Sib** **Do**

me - ra - vi - glio - sa oc - chi di so - le — mi bru - cia - no in mez - zo al cuo - re

F **Dm** **Bb** **C** **F** **Dm** **Bb** **C**



Fa **Rem** **Sib** **Do** **Fa** **Rem** **Sib** **Do**

a - mo - re è vi - ta me - ra - vi - glio - sa

F **Dm** **Bb** **C** **F**



Fa **Rem** **Sib** **Do** **Fa**